



NYC

Fall 2024
AUGUST TRENDS

1. PREP CLUB / PLAID SHOP

GREY / BERGANDY PLAID



5784 MAXI BLAZER
CEM: Y/D PLAID
 EC-66636H
 64P/32R/4SP/220GSM/56/57"
XUYAN: XY9110
 84P/14R/2SP / 57/58 / 186GSM



5785 BOYFIRED BLAZER
XUYAN: Y/D PLAID
 XY12883
 68P/28R/4SP/276GSM/78"



9784 PLEATS SKIRT
JOINLINK: Y/D PLAID BENGLAINE
 JL-SHN-1418
 75R/22N/3SP/260GSM/57/8"

GREEN / NAVY PLAID



5806 CROPPED FIT JACKET
6495 WIDE LEG PANT



JOINLINK: JL-SHN-2729
 29R/28P/3SP/265GSM/56"
MERRYDAY: MD-LV-BF20-206
 88P/10R/2SP / 190GSM



PRINTED PLAID IN TECH TWILL



5786 PLAID MAXI VEST



6494 PLAID FLARED PANT

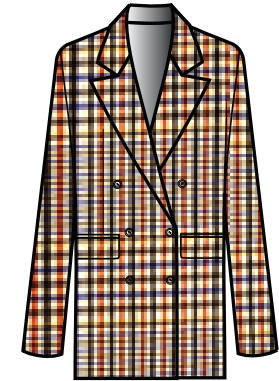


LNB: NOMINATED TECH TWIL
 UN-C152345
 89P/11SP/213GSM/57/8"
 ART. fa24wc301

NETURAL / BROWN



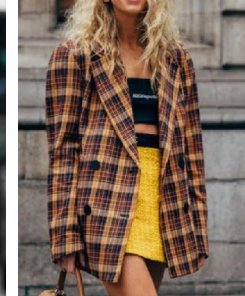
5787 DOUBLE BREAST BLAZER
6475 WIDE LEG PANT W. CUFF
LNB: Y/D PLAID
 SD-TRSP-231023-336
 64P/34R/2SP/230GSM/56"



5788 DOUBLE BREAST BLAZER
6476 SLIM FIT PANT
JOINLINK: JL-SHN-2721
 40R/56P/4SP/285GSM/56"
LAVIE: HFA-22938
 65P/33R/4SP/ 250GSM/ 56"



5805 BOYFIRED BLAZER
6493 WIDE LEG PANT

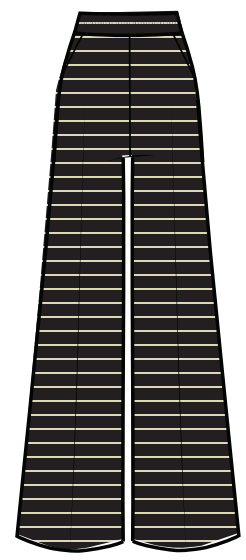


1. PREP CLUB

Y/D STRIPED KNIT

CEM: EC231676-ZH / 50C/47.54C/2.5SP/ 350GSM / 56"
 STAT: ST-08301 / 50C/47.54C/2.5SP/ 350GSM / 56"
 GT: SAME QUALITY AS 5716 & 9676

*****VENDOR PROVIDE COLOR CARD TO PICK 2ND COLOR WAY (NEUTRAL COLORWAY)**



*5716 STRIPED KNIT GARDIGAN (*REPEAT BODY)
 9727 STRIPED KNIT CULOTTE



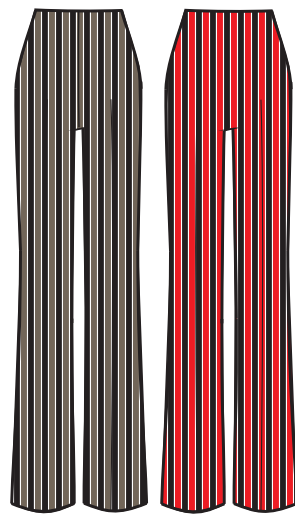
Y/D STRIPED DOUBLE KNIT



STAT: ST-9708 / 60R/32N/5SP/ OLIVE/NAVY / CORAL/NAVY
 LNB: UN-C230789 / 65R/30P/5SP / 350GSM / 62/63"
 GT: GM-869-1# / 320GSM



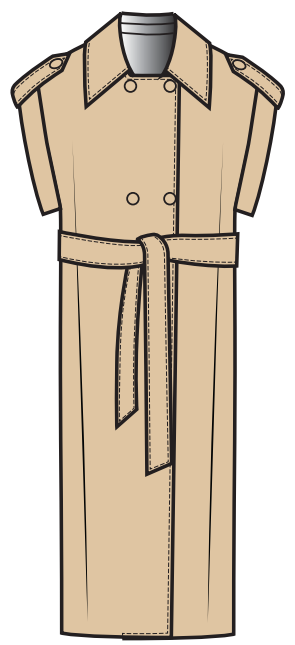
5791 STRIPED KNIT BLAZER



9728 STRIPED KICK FLARE PANT



SLEEVELESS TRENCH / ALL SEASON ST.



5790 OVERSIZED MAXI TOPPER
 LNB: ALL SEASON STRETCH



2. PRETTY IN PAISLEY

FOULARD JAC BENGALINE



JOINLINK:
 NAVY: JL-SHJ-1687 /
 58.5R/21.5N16.5P/3.5SP / 270GSM / 56"
 GREEN: JL-SHJ-1761 /
 36R/11.5N/48.5P/4SP / 300GSM / 56"



5793 DBL BREAST BLAZER
 6477 PULL-ON TROUSER



5794 SHRUNKEN FIT BLAZER
 6478 PULL-ON ANKLE



PAISLEY PRINT ON BENGALINE



JOINLINK: JL-SHP-20342
 60R/37C/35P/3.5SP /
 250GSM / 56"



6479 PULL-ON BOOT LEG

PAISLEY ON SATIN



GREEN: STAT
 STAW0732 / DARK GREEN BASE
 PATCHWORK: HANG ZHE
 HZQR-YFBH-41318 / 100P / 100GSM



6481 PULL-ON WIDE LEG
 6482 PULL-ON STRAIGHT LEG

FOULARD MIX MEDIA



*PRINT MIX
 CEM: 2 PRINTS PER STYLE
 OLIVE PLAID: ZH181010
 NAVY FOULARD: ZH191095
 (NAVY BRWOM COMBO)



9787 MIX MEDIA WRAP SKIRT
 6483 MIX MEDIA PANT

PLEATED FOULARD



CEM: PLEATED PRINTED SATIN
 ZH191095 / 100P / 100GSM / 57/58"
 (BLUE / BROM COMBO)



9788 PLEATED SKIRT

3. CHIC ESSENTIALS / THE LADY JACKET

TEXTURED



5795
V-NECK LADY JACKET

LAVIE: SOLID TEXTURED TWEED
HFZ-53180 / 336GSM / 100T / 57/58"

TEXTURED KNIT



LNB: KNIT TWEED
UN-C222198 / 270GSM / 57/60" /
74T/24C/2SP /
10S+70D+1150D+300D+40D



5797 LADY KNIT CARDIGAN
9729 KICK FLARE PANT



3. CHIC ESSENTIALS / PU SHOP



JACKET

5798 VEST & 5799 BLAEZR
GS: * SAME AS BEST SELLING DRESS
LNB:SD-PU-231023-363 / 100PU/100P / 309GSM / 53"
CEM: EC8656JD / 100P / 290GSM
STAT: STDC231026 / #1.BLACK/#53IVORY/#4.COFFEE BEAN



5798 PU CORSET VEST



5799 PU BLAZER



5800 PU CROPPED JAKCET
LNB:SD-PU-231025-316 / 100PU/100R / 323GSM / 53"
HANG ZHE: HZAR-HQ-KLN / 100P/PU
CEM: EC6736-YX
KAYTEX: KT-AK1642PUP / 100PU/95P5P / 310GSM



6487 PU BOMBER JAKCET



6488 PU MAXI BLAZER



5798 VEST & 5799 BLAEZR
LNB: SD-PU-231025-311 / 100PU/100R / 325GSM / 53"
HANG ZHE: HZAR-HQ-ZQC / 55T/15V//PU /
STAT: ST2516 / ST-HD6082 / 50PU/50R
CEM: EC1215 / 100P / 324GSM

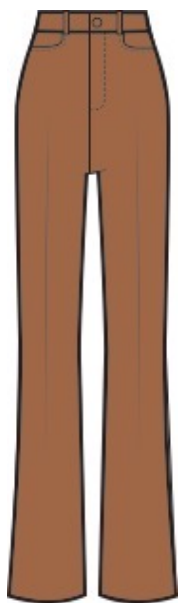
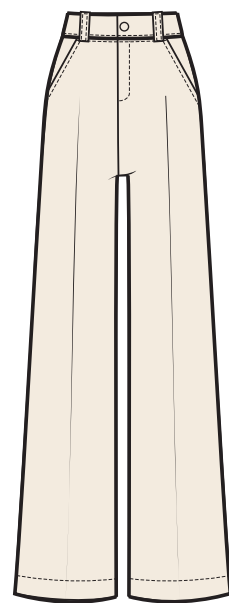
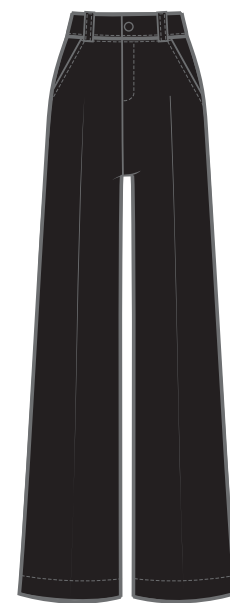


3. CHIC ESSENTIALS / PU SHOP



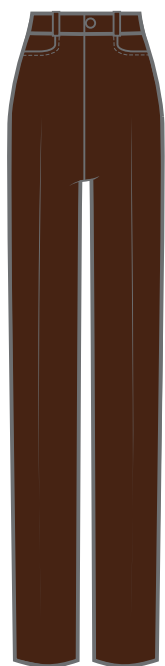
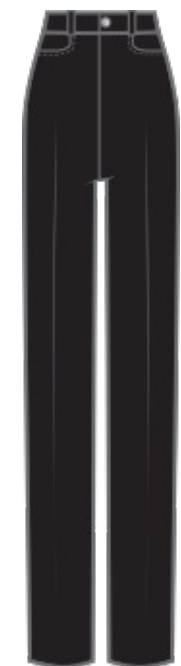
PANT

PANTS / SAME AS 5798&5799
GS: GT1-NY230401-59
LNB: SD-PU-231023-363 / 100PU/100P / 309GSM / 53"
CEM: EC8656JD / 100P / 290GSM
STAT: STDC231026 / #1.BLACK/#53IVORY/#4.COFFEE BEAN



6484 CROPPED WIDE LEG

6485 KICK FLARE LEG



6486 90'S JEAN LEG
***SENT SAMPLE TO LNB**



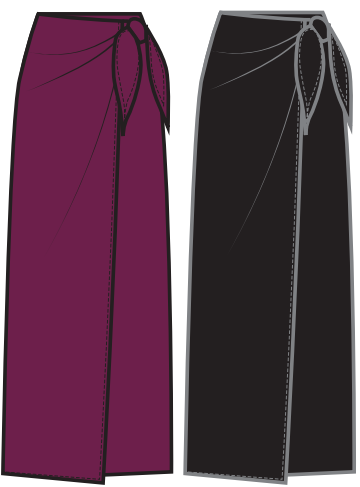
SKIRT



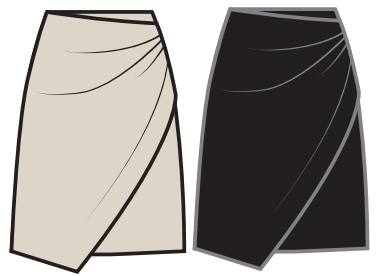
9790 MAXI SKIRT



9793
 BUTTON FRONT MINI SKIRT



9791 WRAP MIDI SKIRT
*** SAME AS PANTS QUALITY**



9792 WRAP MINI SKIRT
*** SAME AS PANTS QUALITY**



9790 & 9793
LNB: SD-PU-231025-311 / 100PU/100R / 325GSM / 53"
HANG ZHE: HZAR-HQ-ZQC / 55T/15V//PU /
STAT: ST2516 / ST-HD6082 / 50PU/50R

9791 & 9792 / SAME AS PANT & 5798,5799 (JACKET)
GS: GT1-NY230401-59
LNB: SD-PU-231023-363 / 100PU/100P / 309GSM / 53"
CEM: EC8656JD / 100P / 290GSM
STAT: STDC231026 / #1.BLACK/#53IVORY/#4.COFFEE BEAN

3. CHIC ESSENTIALS / WASHED DENIM LOOK



WASHED TWILL

YUDE:
 BLACK: YD2300860X / 100LYOCELL / 54" / 318 GSM
 TAN & GREY: YD2300859X / 67LYOCELL/33P / 132CM / 218GSM
 LNB: SD-TCSP-231023-308 / 70C/27P/3SP / 240GSM / 56"



6489 WIDE LEG CARGO PANTS
 6490 CROPED CARGO PANTS

NOVELTY DENIM

STAT: STAT001



5801 FLORAL DENIM JAKCET
 9794 FLORAL DENIM SKIRT

4. TIMELESS WORKWEAR / GEO SHOP

GEO JCQ BEGALINE

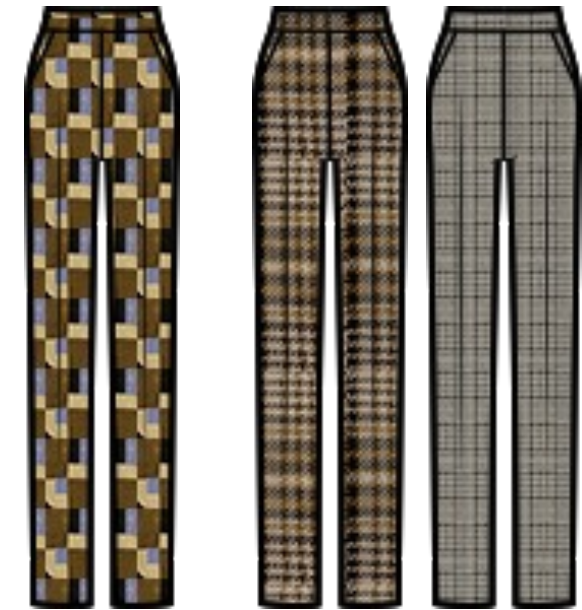
JOIN LINK: JL-SHJ-1694
75R/11P/10N4SP/ 300GSM / 56"



5802 SHRUNKEN BLAZER
6491 GEO PULL-ON STRAIGHT



GEO ON KNIT



9730 GEO KNIT ANKLE
9731 BRWON PLIAD KNIT ANKLE
9732 B/W PLAID KNIT ANKLE

KAYTEX:
GEO: KT-221369BW / 96P/4SP / 63" / 360GSM
PLAID: KT-221753BW / 97P/3SP / 58/59" / 209GSM

LAVIE:
PLAID: YCJY14405 / 58/59" / 320GSM / 66.5P/22.5R/6SP/5N

6. HOT NIGHTS OUT/ SKIRT SHOP

LACE INSERT

YUDE: CEY SATIN
WZL-1959-1 / 100P / 75D*180D"
ART.SP24CW218_8



9795
LACE INSTERED MIDI SKIRT

PRINTED FAILE

ZHENFU: GMSY-VBZ0611
XUYAN: XY11111 / 100P / 267GSM / 57/58"
LAVIE: YCJY12509 / 58/59" /160GMS / 54C/46VIS
ART. fa24ds203



9796
PRINTED FAILE SKIRT

COLOR BLOCK MAXI

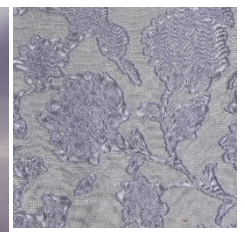
ZHENFU: GMSY-VBZ0611
XUYAN: XY11111 / 100P / 267GSM / 57/58"
LAVIE: YCJY12509 / 58/59" /160GMS / 54C/46VIS



9797
COLORBLOCK SKIRT

NOVELTY JCQ

MERRY DAY: FLROAL JCQ ORGANZA
* SAME QUALITY AS #6722



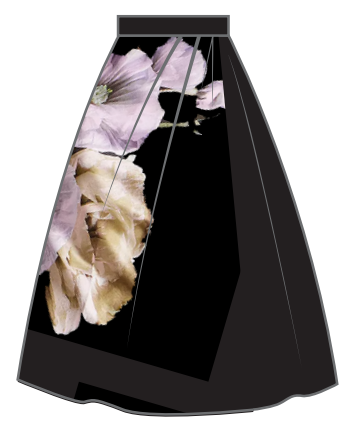
Purple Heather
14-3911 TCX



9798
FLORAL JCQ ORGANZA SKIRT

HEAVY SATIN / POLY DUCHESS

STAT: HEAVY SATIN
ST-2059-12 / 95P/5SP / ART. FA24CW126



9799
PLACED FLORAL SKIRT

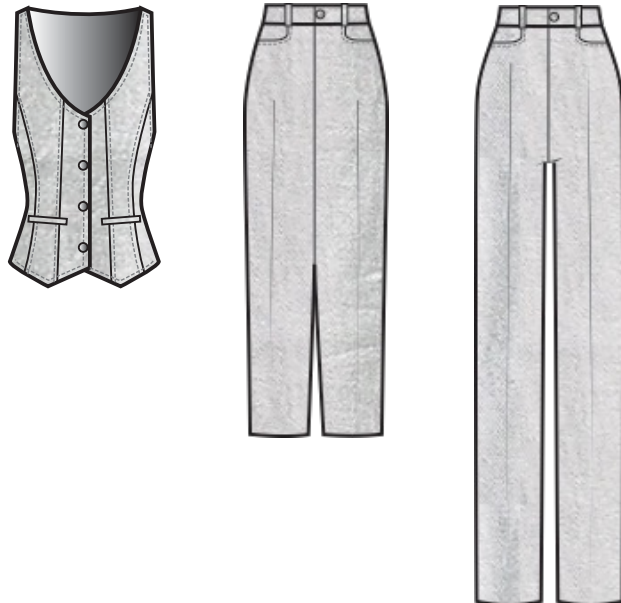
6. HOT NIGHTS OUT / METALIC SHOP

METALIC FOILED STRETCH



SILVER PU
LNB: SILVER PU / SD-PU-231025-303 / 100PU/100P / 329GSM / 53"
STAT: SILVER PU / STDC231026 / #45. SILVER

SILVER FOIL
CEM: ZH231495 / 20N/77R/3SP / 56/58 / 260GSM
SEATTLE: * SAME QUALIUT AS DRESS #K230902



5803 CORSET VEST
 9800 SLIT FRONT SKIRT
 6492 90'S JEAN LEG



LUREX FLORAL LACE

LAVIE: LUREX 3D THREAD FLORAL LACE
 TY31236 / GUBNMETAL



9801
 GUNMETAL FLORAL LACE PENCIL

6. HOT NIGHTS OUT

CRYSTAL MESH COMBO



MAIN SUIT
LNB: UNITEX: UN-C230522 / 55-58" / 230GSM / 88/12 PL/SP
CEM: EC62161 / 76P/20R/4SP / TR / 254GSM / 57/58"
STAT: ST-1385-2105 /



MESH W. RHINESTONE
CEM: EWH10623 (BLACK MESH) / 100P / 285GSM



5804 CRYSTAL CUFF BLAZER
 9802 CRYSTAL MESH MINISKIRT

TEXTURED MESH



9733
 FLARED LEG PANT

CEM: EC231835 / 95P/5SP / 53/54" / 250 GSM OR EC231851



PRINTED MESH

- NOMINATED MESH QULAITY
- ART.SP24CW303_1



9734
 PULL-ON WIDE LEG



9803
 RUSHED SIDE SKIRT

STRETCH LACE

KAYTEX: KT-R2170BH / 97N/3SP / 61" / 127GSM

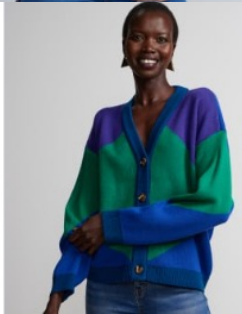
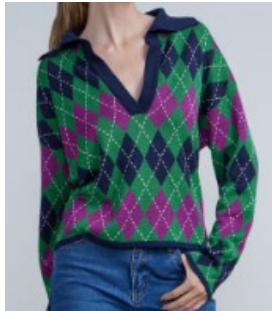


9735
 FLARED LEG PANT

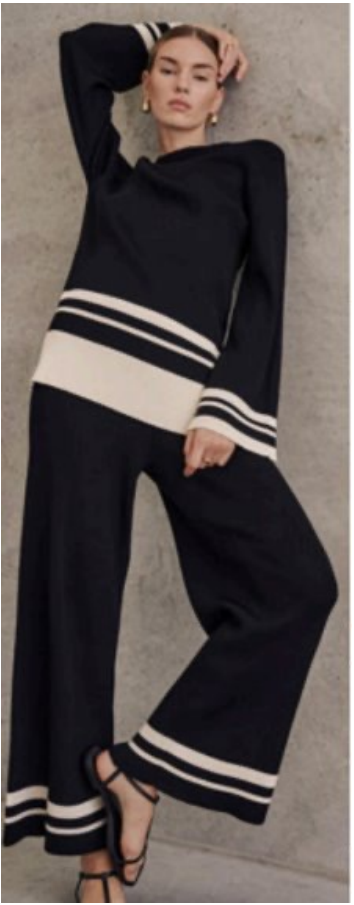
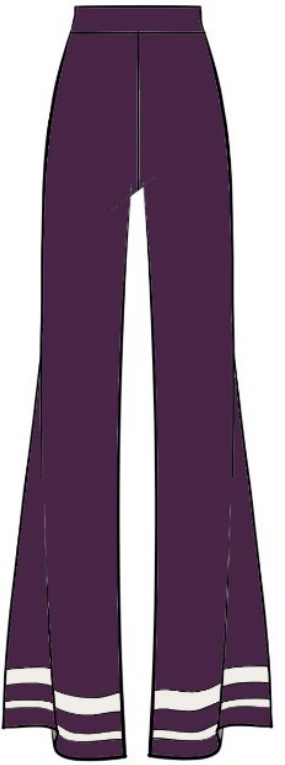
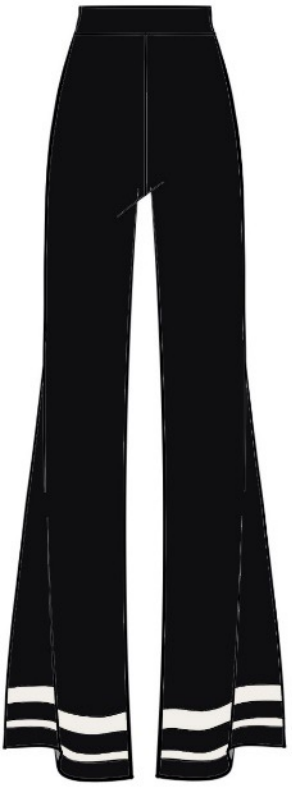
MATCHING SETS



MATCHING SETS



MATCHING SETS



FALL
TAILORING
ESSENTIAL SUIT

THE FALL TAILORING ESSENTIAL SUIT



EVERYDAY SUIT

CLASSIC SUIT

MODERN ICONIC SUIT

PERFECT SUIT

PREMIUM LUXURY
SUIT

SCULPT SUIT

LUXE TAILORED SUIT

SEASONLESS CREPE

ALL SEASON STRETCH

BENGLAINE

PONTE

4-WAY DBL CREPE

SCUBA & PU

LUXE SUITING

EVERYDAY SUIT

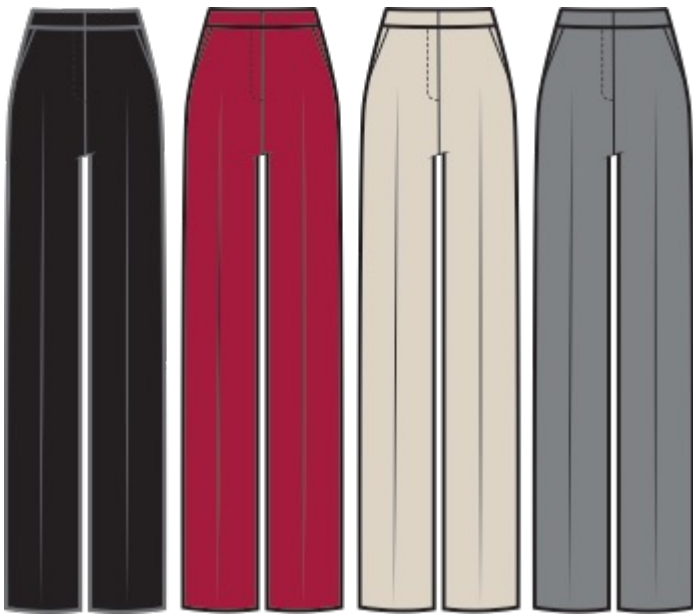
SEASONLESS CREPE



Black Archroma
 Cerise 19-1955 TCX
 Birch 13-0905 TCX
 Gray Flannel 17-4016 TCX

FABRIC: SEASONLESS CREPE
 VENDOR: LNB
 NOTE:
JACKET
 ST-12460-3 / 89/11 POLY/SPAN / \$14.85
 UN-C230802 / 90/10 POLY/SPAN / \$15.15
 *processing above 2 version to choose.

PANT
 ST-12460-3 / 89/11 POLY/SPAN /
 UN-C230802 / 90/10 POLY/SPAN /



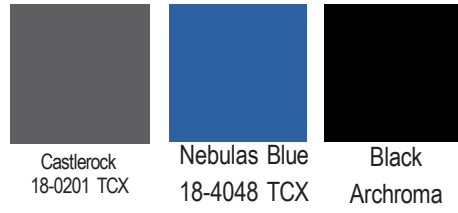
5769 ONE BUTTON BLZER
 6470 STRAIGHT LEG PANT



CLASSIC SUIT

* REPEAT BODY

ALL SEASON STRETCH : CLASSIC SUIT



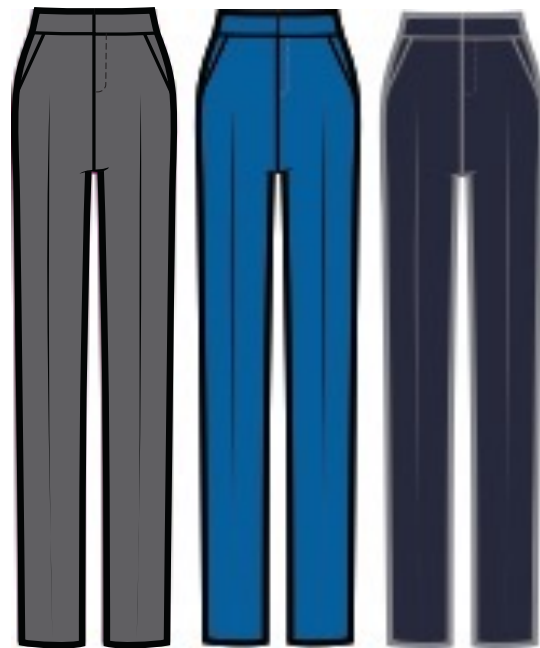
FABRIC: ALL SEASON STRETCH
VENDOR: LNB
NOTE:



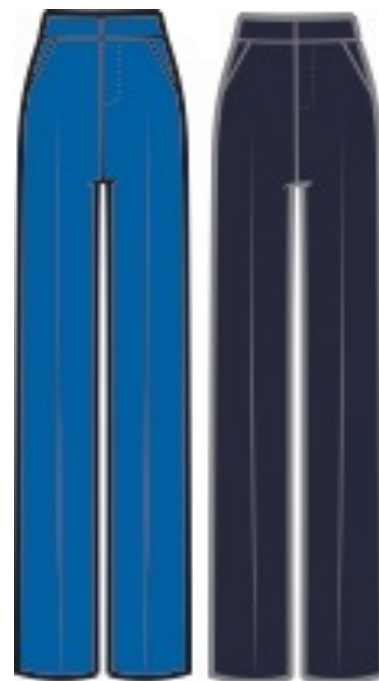
5768 CLASSIC SLIM FIT BLAZER



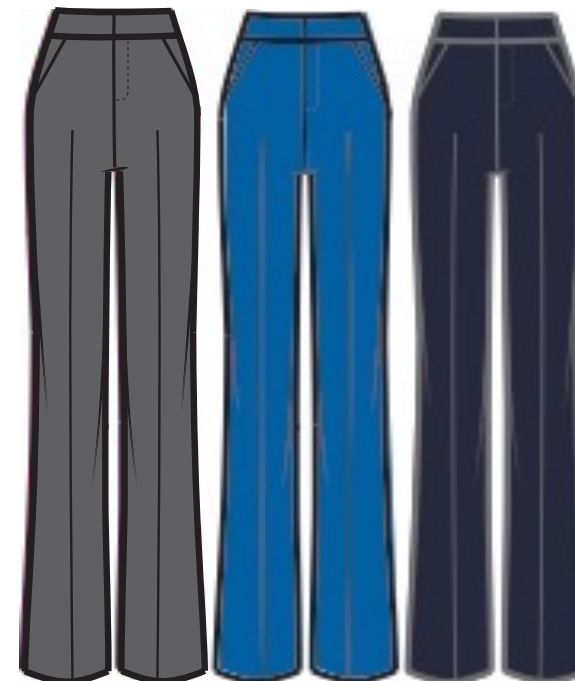
5770 CALSSIC WAISTCOAT & 9779 MINI SKIRT



*6034/6064 ANCKLE PANT



*6033/60645 STRIAHT LEG PANT



*6039/6067 BOOT-CUT LEG PANT



MODERN ICONIC SUIT

* REPEAT BODY

SOLID BENGALINE



Poppy Red
17-1664 TCX

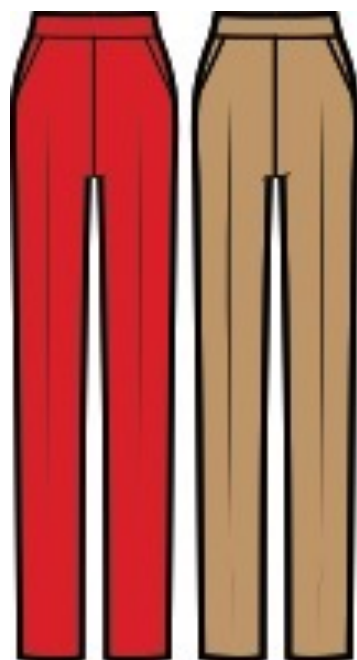


Apple Cinnamon
17-1045 TCX

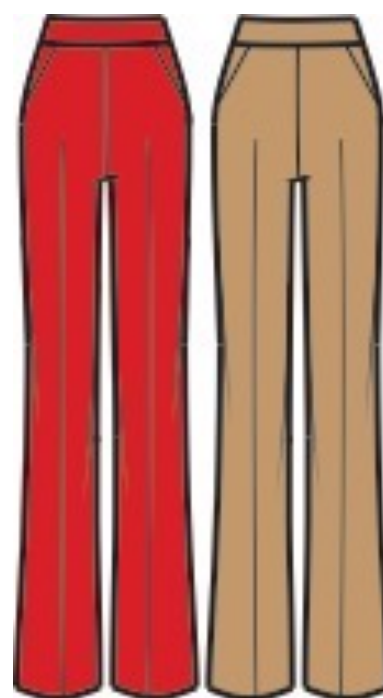
FABRIC: SOLID BENGALINE
VENDOR: LNB
NOTE: CRT-50414 / 73R/23N/4SP / 280GSM / 56/58"



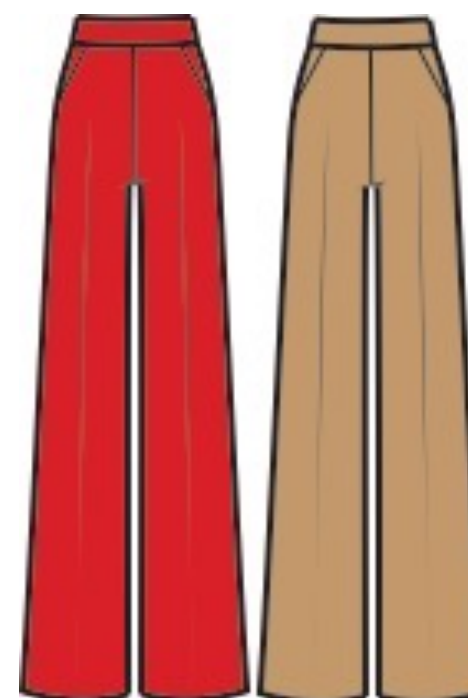
5771 ICON BLAZER



*6055 ANCKLE PANT



*6058 BOOT-CUT LEG PANT



6463 WIDE LEG PANT

Y/D STRIPE BENGALINE

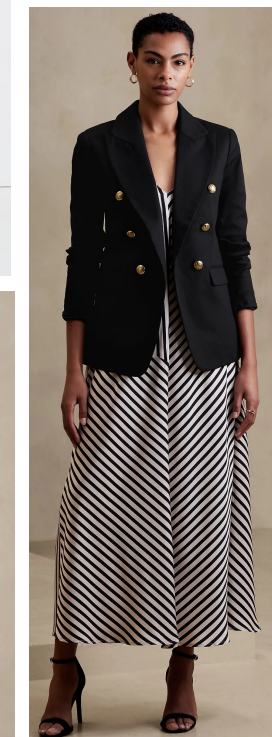
FABRIC: Y/D BENGALINE
VENDOR: LNB
NOTE:
JOIN LINK
INDIGO/ JL-SHN-2847 / 75R/22N/.3SP/250GSM/56" CW
IIVORY/ JL-SHN-2846 / 75R/22N/.3SP/250GSM/56" CW



5772 STRIPED ICON BLAZER



6462 CROPPED KICK-FLARE



PERFECT SUIT

* REPEAT BODY

PONTE



Black
Archroma



Cerise
19-1955 TCX



Little Boy Blue
16-4132 TCX



Ocean Cavern
19-3937 TCX

FABRIC: PONTE

GT: GME23090903 / R62/33P/5SP / 350GSM

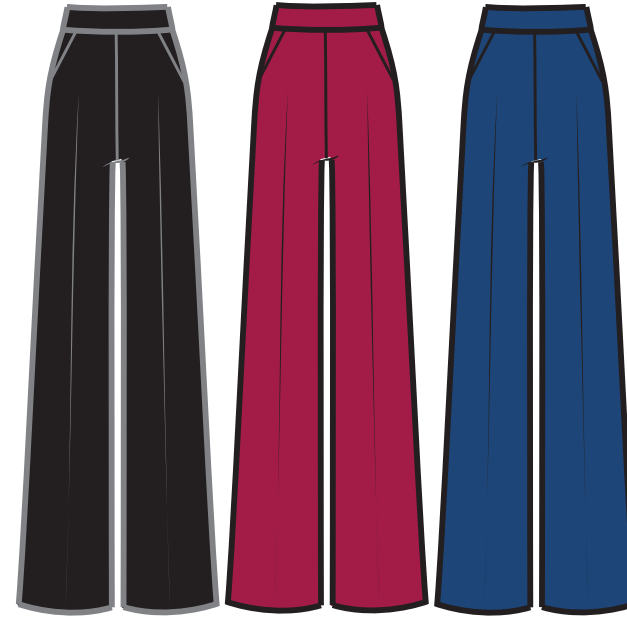
LNB: *** SOURING QULAIYT ***

SUB: UN-C200429 / 62/63" / 310GSM / 76T/19R/5S / TRS PONTE

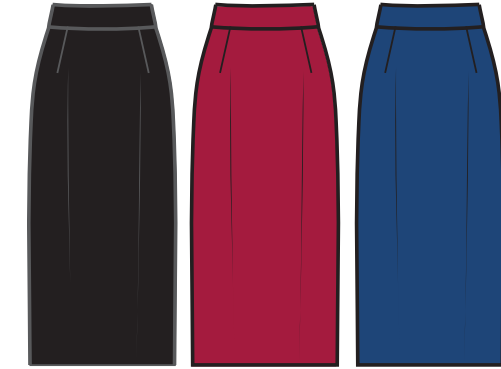
CEM: EC2363 / 60R/35N/5SP / 380GSM / 59"60"



5773 PERFECT BLAZER



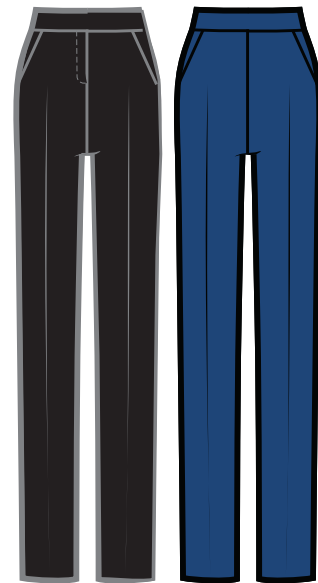
9718 PERFECT PANT
BLACK, CERISE, LITTLE BOY BLUE



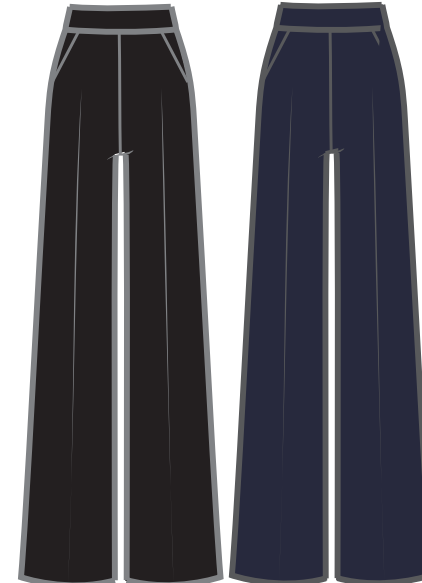
9782 PERFECT PENCIL SKIRT
BLACK, CERISE, LITTLE BOY BLUE



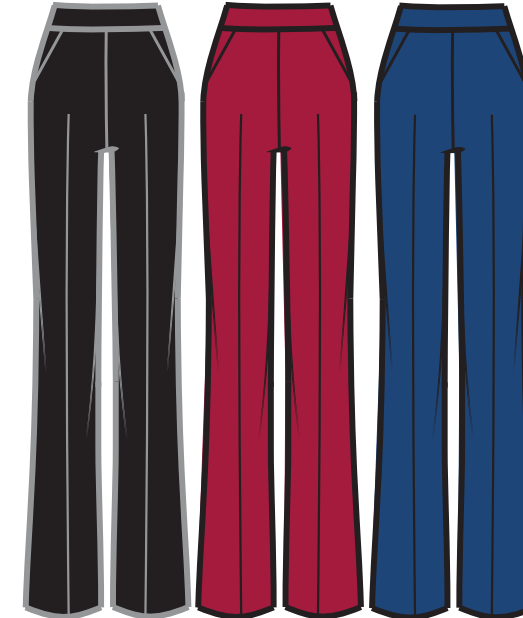
* 9652 PERFECT LEGGINGS
BLACK, CERISE



* 9653 PERFECT ANKLE
BLACK, LITTLE BOY BLUE



9654 PERFECT CROPPED WIDE
BLAZK, OCEAN CAVERN



* 9655 PERFECT BOOT LEG
NAVY, CERISE, LITTLE BOY BLUE



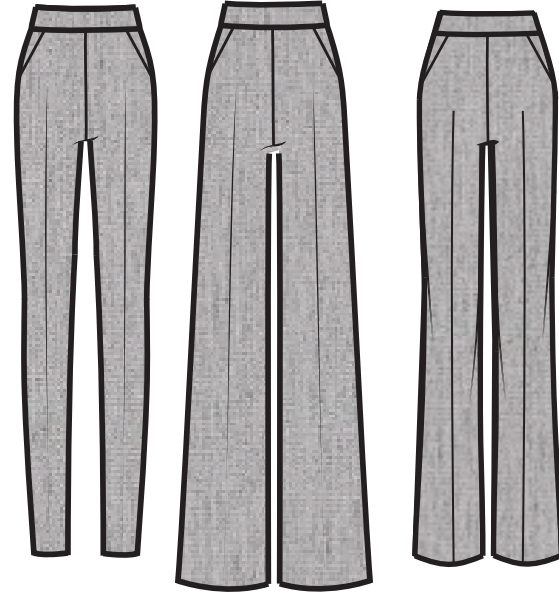
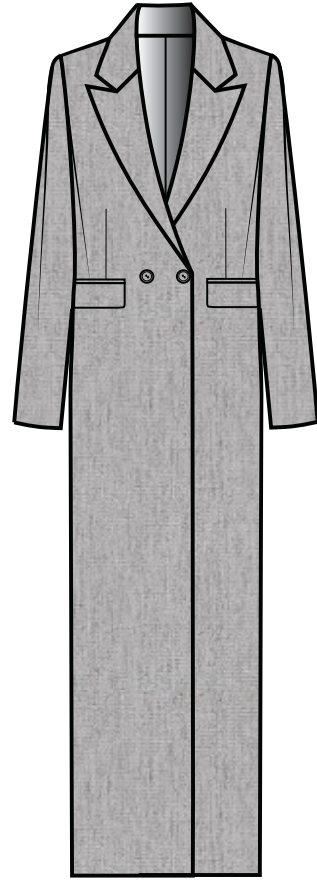
PERFECT SUIT

* Heather grey col. As fabric Header

HEATHER GREY PONTE



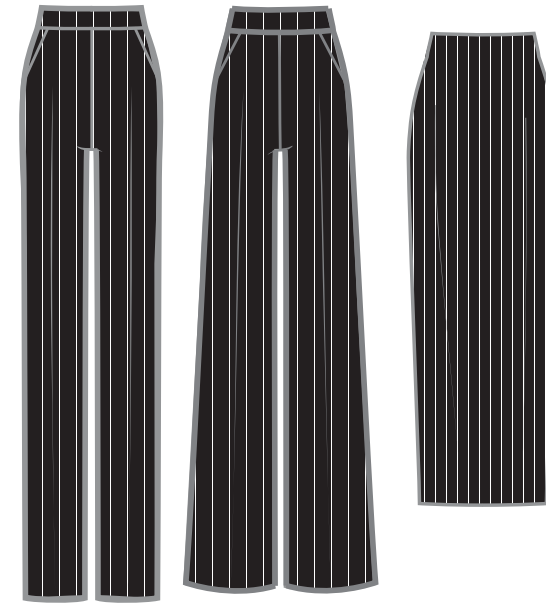
FABRIC: HEATHER GREY PONTE
GT: GMKC01694 / 59/61" / 78P/18R/4SP / 320GSM
LNB: *SENT SAMPLE TO SOURCE
SUB : KAYTEX / KT-6037JH / R63/N32/SP5 / 63" / 320GSM



5774 PONTE CAR COAT
9720 LEGGINGS
9721 WIDE LEG PANT
9726 BOOT LEG PANT

Y/D STRIPED PONTE

FABRIC: Y/D STRIPED PONTE
GT: ROMA / #6001 / 400GSM
LNB: *SENT SAMPLE TO SOURCE
SUB: SD-RNTSP-231020-306 / 320GSM / 61" 63R/17N/16P/4P
***NEED TO BE 380-400GSM**
CEM: EC042-P11QM / 68R/27N/5SP / 400GSM / 155CM



9722 STRIPED PONTE STRAIGHT LEG
9723 STRIPED PONTE WIDE LEG
9783 MIDI PENCIL SKIRT

PREMIUM LUXURY SUIT

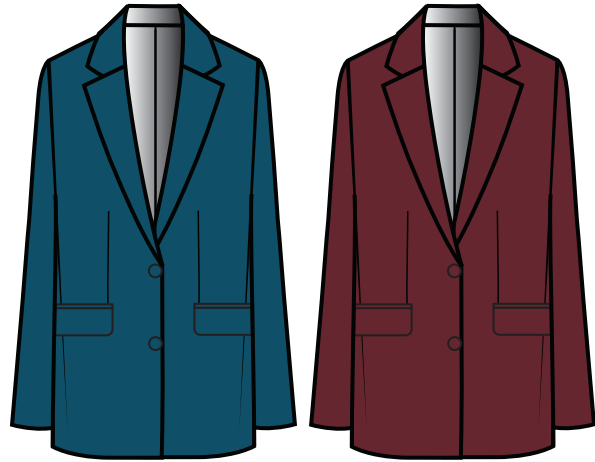
FABRIC: 4-WAY DOUBLE CREPE
 VENDOR: LNB
 NOTE: UNITEX: UN-C230522 / 55-58" / 230GSM / 88/12 PL/SP
 CEM: EC62161 / 76P/20R/4SP / TR / 254GSM / 57/58"
 STAT: ST-1385-2105 /

* REPEAT BODY

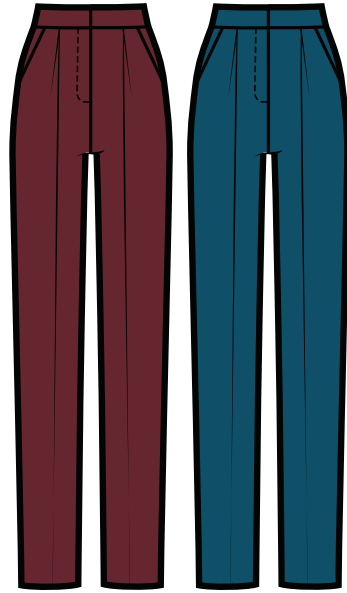


Moroccan Blue 19-4241 TCX
 Cabernet 19-1724 TCX

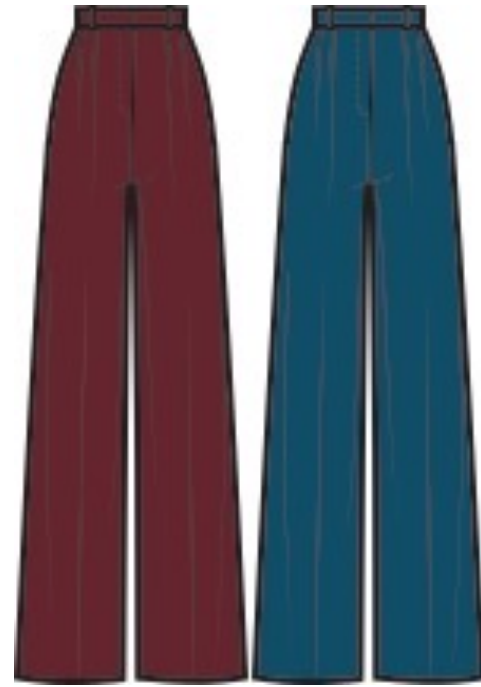
4-WAY DOUBLE CREPE : SOLID



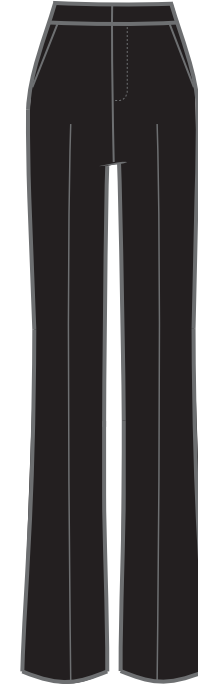
5775
BOYFIREND BLAZER



*6053/6068
PLEATED ANKLE PANT



*6054/6069
PLEATED WIDE PANT



6473
FLARED LEG



* REPEAT BODY

4-WAY DOUBLE CREPE : PRINTED

FABRIC: PRINTED 4-WAY DOUBLE CREPE
 VENDOR: LNB
 NOTE: DIGITEX FABRIC & ARTWORK
 D039681 / 15040102M / 75D4WAY DBL CREPE /
 88P/12SP / 150CM / 260GSM
 SAME AS 6072



5776
FLORAL CAR COAT



*6027/6074
STRAIGHT LEG PANT

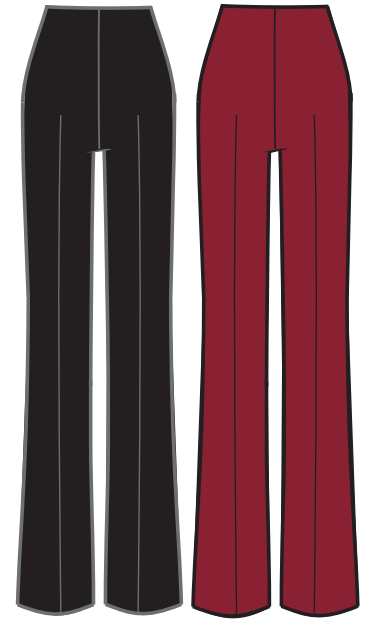
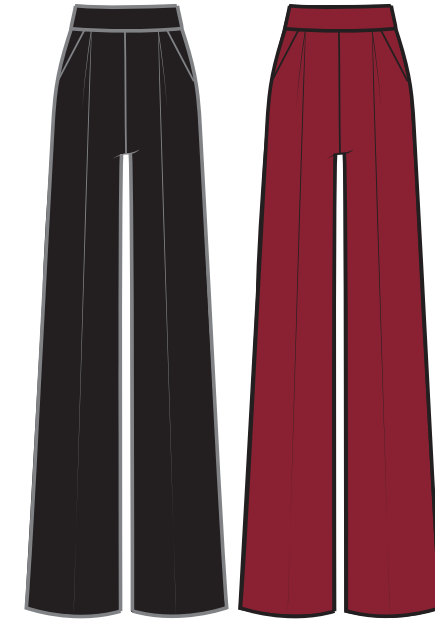
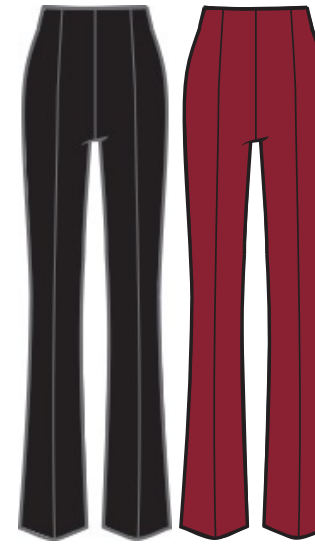


SCULPTED SUIT

SCUBA



FABRIC: SCUBA
GT: GMKC01764 / 58/60" / 88P/12SP / 392 GSM / JC-6023
LNB: SD-PSP-231122-604 / 95P/5SP / 390GSM / 58"CW
CEM: EC259QM / 90P/10SP / 400GSM / 160CM



5778 SCUPTED BLAZER
 6465 PULL-ON KICK FLARE
 6466 SCUBA TROUSER
 6474 PULL-ON FLARED LEG

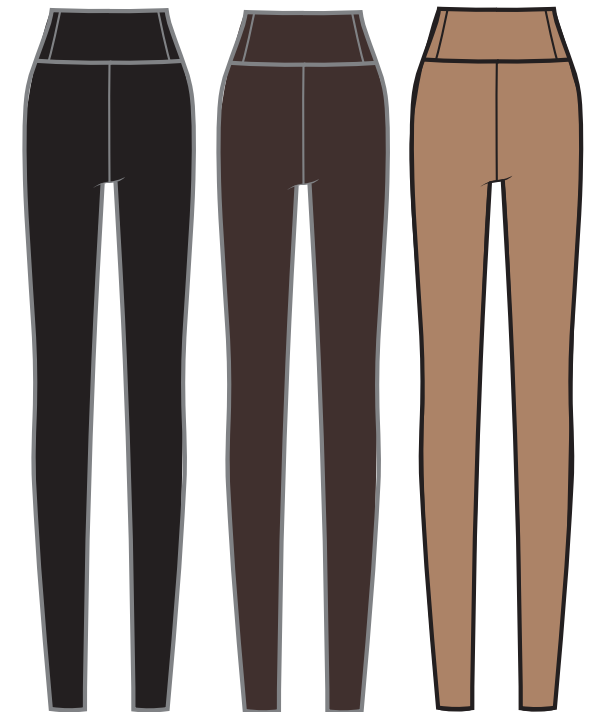
PU



FABRIC: PU
VENDOR: LNB
NOTE: UNDERSOURCING W. ORI. SAMPLE (SPANX & ARIZIA)



6460
 LEATHER LIKE FLARE PANT



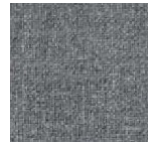
6461
 LEATHER LIKE LEGGINGS

LUXE TAILORED SUIT



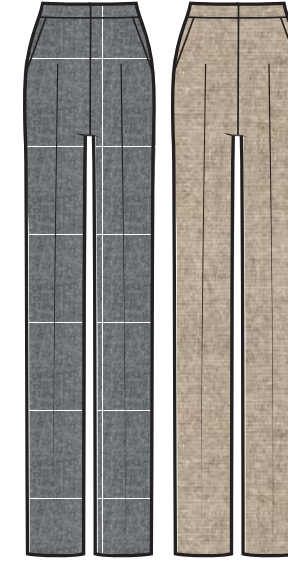
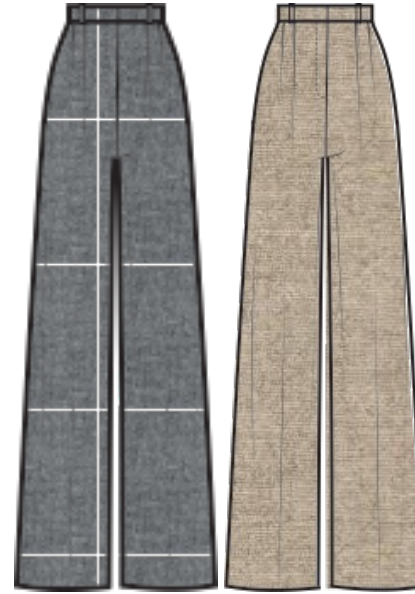
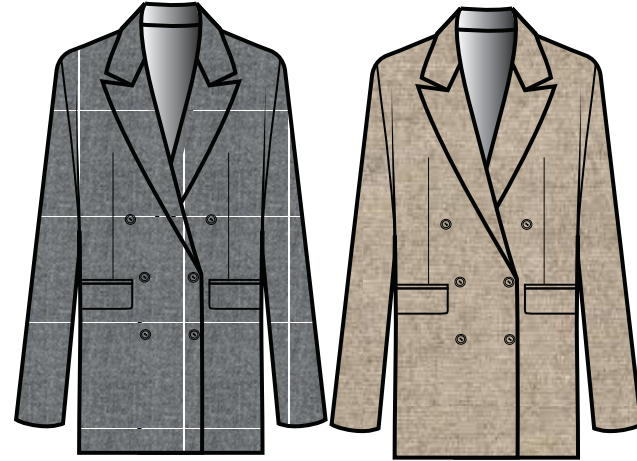
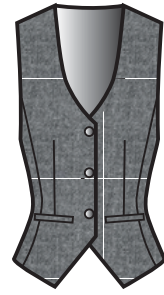
* Heather grey col. As fabric Header

LUXE SUITING



Med Htr Grey Oatmeal Htr

FABRIC: LUXE
GT: GMKC01987 / 57" / 67P/29VIS/4SP / 270GSM
LNB: * SENT GT FABRIC TO SOURCE
CEM: * SENT GT FABRIC TO SOURCE



5782
MEN'S WAISTCOAT

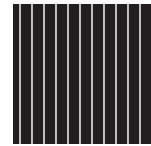
5783
BOYFRIEND BLAZER

*6052/6070
CLASSIC TROUSER

6468
SLIM LEG PANT



PIN STRIPE



Pinstripe as Header

FABRIC: PIN STRIPED SUITING
LNB: SD-TRSP-231204-615 / P92/R2/SP6 / 200GSM / 56"CW
CEM: EC-SJ-C723-ZH / 68T/30R/2SP / 200GSM / 57/58"



5780
MEN'S WAISTCOAT

5781
BOYFIRED BLAZER

6469
CLASSIC TROUSER

