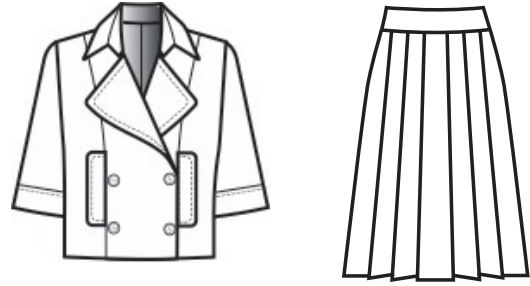




Pre-Fall 2024
JULY-AUG TRENDS

WHITE ALL SEASON STRETCH



5759 SHORTS SLV JACKET (SP235453)
9757 PLEATED SKIRT

FABRIC: ALL SEASON STRETCH
VENDOR: LNB
NOTE:
* TRUE WHITE

INDIGO BENGALINE



5761 CORSET VEST (*5739 MAY)
9758 FRONT SLIT MIDI SKIRT (*9737 MAY)
6007 SHORTS (*5991 MAY)

FABRIC: P/D MELANGE 2/2 DIVERSIFIED TWILL BENGLINE (SINGLE DYE, COTTON)
VENDOR: JOIN LINK
NOTE: JL-SHS-246 / 77C/20N/SP3
* COLOR AS HEADER

STRIPED CHAMBRAY



6439 STRIPED CHAMBRAY WIDELEG PANT
6008 PLEATED FRONT SHORTS

FABRIC: STRIPED LYOCELL
VENDOR: HANGZHE
NOTE: HZAF-GY02
* COLOR AS HEADER, 5TH (LAST ONE)

INDIGO PLAID

FABRIC: PLAID DENIM
VENDOR: STAT INDUSTRIAL
NOTE: ST-A65-1 / #4TH SHADE
* COLO AS HEADER



6440 INDIGO PLAID KICK FLARED PANTS
5761 INDIGO PLAID VEST

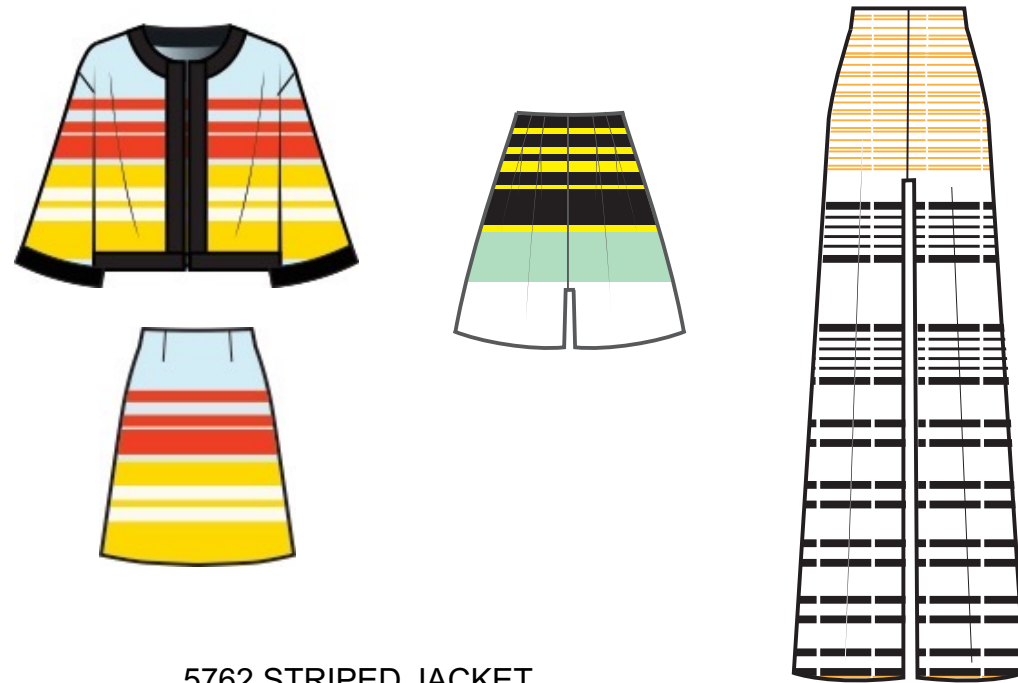
STRIPED LINEN

FABRIC: PRINTED LINEN

VENDOR: CEM

NOTE:

- SAME QUALITY AS MAY
- 5745,5999,9741
- IN-HSE ARTWORK



5762 STRIPED JACKET
 9759 STRIPED MINI SKIRT
 6009 STRIPED SHORTS (*5999)
 6440 STRIPED HIGH WAISTED PANTS (*6093)

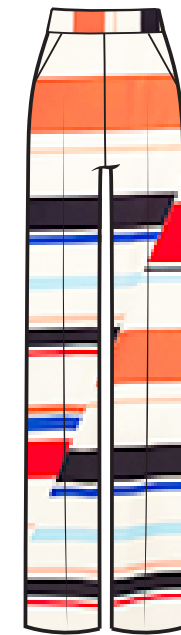
BROKEN STRIPED DOUBLE CREPE

FABRIC: PRINTED 4-WAY DOUBLE CREPE

VENDOR: DIGITEX

NOTE:

- SAME QUALITY AS ESSENTIAL
- MARCH / 6072
- VENDOR ARTWORK & QUALITY



6441 BROKEN STRIPED PANTS (*6072 MAR)

PRINTED BENGALINE

FABRIC: 2/1 TWILL REACTIVE PRINTED

BENGALINE

VENDOR: JOINLINK

NOTE:



JL-SHP-1595



JL-SHP-1948



6442 FLORAL PRINT KICK FLARED PANTS (*5943 MAR)
 9731 FLORAL PRINT FLARED SKIRT
 6010 FLORAL PRINT SHORTS (*5662 MAR)



6443 PRINTED CORSET VEST (*9749 MAY)
 6011 PRINTED PLEATS FRONT SHORTS (*5991 MAY)

PRINTED SATIN



6444 PRINTED STRAIGHT LEG
(*6084, slimer leg)
6419 PULL-ON SHORTS (*5961 APR)

FABRIC: PRINTED SATIN
VENDOR: DALI YUDE
NOTE: WZL-025-16 (SAME AS APRILS/5961)
*SAME QUALITY AS5961 APRIL

PRINTED CDC



6445 COLORFUL PAISELY PANT (*6718 MAY)
6012 COLORFUL PAISELY SHORT (*5961 APR)

FABRIC: PRINTED CDC
VENDOR: YUDE / DIGITEX
NOTE: C20330 / MURNI CREPE PIRNT / D0416373
* DIGITEX ARTWORK / QUALITY

PRINTED CDC



6446 PRINTED PAPERBAG PANTS
6013 PRINTED CULOTTES

FABRIC: PRINTED CDC
VENDOR: STAT INDUSTRIAL
NOTE: STS00198 / GREEN COMBO , ST-XP02 / PINK COMBO
* PRINT/QUALITY AS HEADER

SCARF PRINT

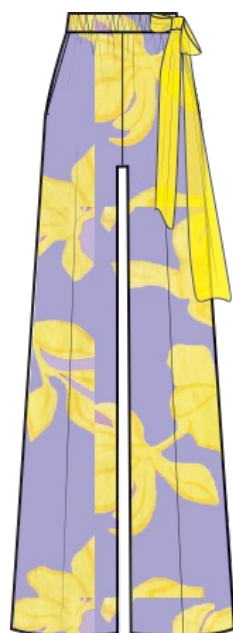


6447 SCARF PRINT PANT (*6084 APR)

FABRIC: PRINTED SATIN
VENDOR: XUYAN TEXTILE
NOTE: XY12792 COL:P1917
* PRINT/QUALITY AS HEADER

PRINTED CRINKLE

FABRIC: CRINKLE RAYON
VENDOR: YUDE
NOTE:
YD2300863X / 54R/49P/ 114 GSM
* IN HOUSE PRINT



6451 PAISELY PAPERBAG SHORTS
6415 OVERSIZED FLORAL PANT (*6099 APR)

FABRIC: BUBBLE JCQ
VENDOR: GS
NOTE:
GT1-N230721-2 / PINK
* COLOR & MOTIF
FROM COLOR CARD



5763 BUBBLE JCQ CROPPED BLAZER
6455 BUBBLE JCQ CARGO PANT

JCQ SUIT

FABRIC: LINEN JCQ
VENDOR: STAT INDUSTRIAL
NOTE:
ST-22080-B / #1. LIGHT BLUE
* COLOR & MOTIF
FROM COLOR CARD



5764 LINEN JCQ CROPPED JACKET
6418 LINEN JCQ SHORTS

PRINTED MATTE JERSEY

FABRIC: PRINTED JERSEY
 VENDOR: MERRY DAY
 NOTE:
 *SAME QUALITH AS D52/9674/APRIL
 * IN HOUSE ARTWORK



9705 PRINTED MATTE JERSEY WIDE LEG PANTS
 9706 PRINTED MATTE JERSEY CROPPED WIDE LEG
 9707 PRINTED MATTE JERSEY BOOT CUT PANTS (*9674 APR)

PRINTED MESH

FABRIC: PRINTED MESH
 VENDOR: DIGITEX
 NOTE: C21966 / POLY MESH / D037053



9762 PRINTED MESH MAXI SKIRT
 9708 PRINTED MESH KICK FLARED PANTS (*9674 APR)

LUREX DOBBY CHIFFON

FABRIC: LUREX DOBBY CHIFFON
 VENDOR: HANGZHE
 NOTE:
 • HANGZHE NEED TO SOURCE
 • SAI / SAI-NY-01



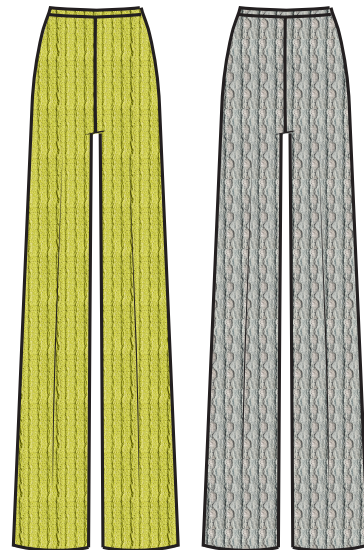
6452 CHIFFON LAYERD CROPPED PANTS (*6730)

KNITTED STRIPE

KNITTED TEXTURE



9709 STRIPED KNITTED PAPERBAG PANTS
 9710 KNITTED TEXTURED STRAIGHT LEG PANTS



FABRIC: KNITTED STRIPED
 VENDOR: LINK FASHION
 NOTE: GONGHUI=GH-230861
 URBANWEAVES
 *DRESS TEAM USED FOR APRIL

FABRIC: KNITTED STRIPED
 VENDOR:
 NOTE:
 * GT / MS21979 / #6 SAGE / #9 WARM OLIVE

EMBROIDERED POLY

EMBROIDERED COTTON

EMBROIDERED GUAZE



6453 EMOIDERD POLY CROPPED PANT
 6416 EMBROIDREED COTTON BEMUDA



FABRIC:
 VENDOR: STRONG PROGRESS
 NOTE:
 *RED / YM231007-7 / HEADER AS IT IS
 *NAVY / YM2310010 / HEADER AS IT IS



6458 EMOIDERD GUAZE PANT
 6417 EMBROIDREED GUAZE SHORTS

FABRIC: EMB. GUAZE
 VENDOR: GT
 NOTE: 7264 / EMBROIDERED GUAZE / #2 BLACK & #3 TAN AS HEADER

PRINTED SATIN



9763 PRINTED BIAS SLIP SKIRT (*9722 APR)

FABRIC: PRINTED SATIN
 VENDOR: YUDE
 NOTE: YD2M0617 / 100P / 158GSM / 156CM
 * IN HSE ARTWORK

PRINTED SLUB



9765 RUFFLE MAXI SKIRT
 6454 WRAP PANTS
 9766 MINI FLARED SKIRT (*9727 APR)

FABRIC: PRINTED TEXTURED SOFT
 VENDOR: YUDE
 NOTE: ART: XY7935 / 100P / 157GSM / 159*S1/INCH / 57/58"
 * IN-HSE ARTWORK

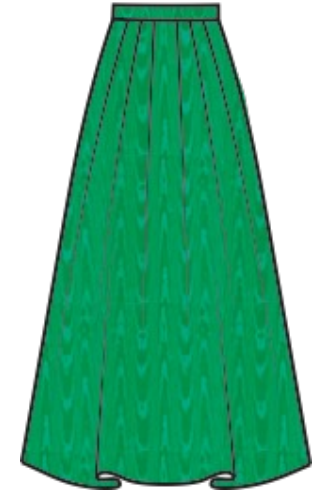
EMB. FLORAL ON MESH



9768 EMB. FLORAL ON MESH SKIRT

FABRIC: EMB. FLORAL ON MESH
 VENDOR: LAVIE
 NOTE: TY31209
 * NAVY AS HEADER

MOIRE TAFFETA



9770 MOIRE TAFETTA SKIRT

FABRIC: STRETCH TAFFETA MOIRE
 VENDOR: ZHENFU
 NOTE:
 * SAME QUALIYT AS S/7454 DEC

HEAVY FAILLE

FABRIC: HEAVY FAILLE
 VENDOR: ZHENFU
 NOTE: GMSY-VBZ0611
 * SAME QUALIYT AS S/7438 NOV



9772 OVERSIZED FLORAL SKIRT (*7438)



9773 PRINTED FLORAL ORGANZA SLIT SKIRT
 9774 WAIST TIE CONTRAST SLIT SKIRT (*7439)



9776 RIBBON EMB. SKIRT (*7438)